



A Community-Sourced Map of the
Cultural Treasures of Santa Monica's
Pico Neighborhood

USER'S GUIDE

updated May 2017

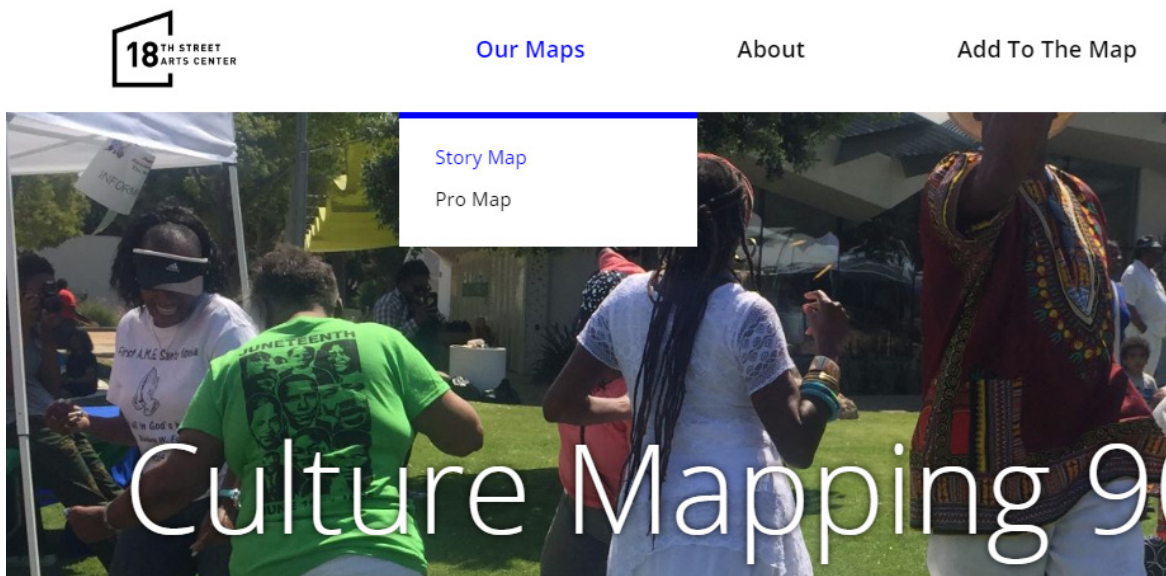
Getting Started

To access the Culture Mapping 90404 website, go to culturemapping90404.org. You will see a homepage image, with the text “Scroll Down to Begin.” When you scroll down, you will see our Story Map pages. The top navigation bar will allow you to go to other areas on the site.



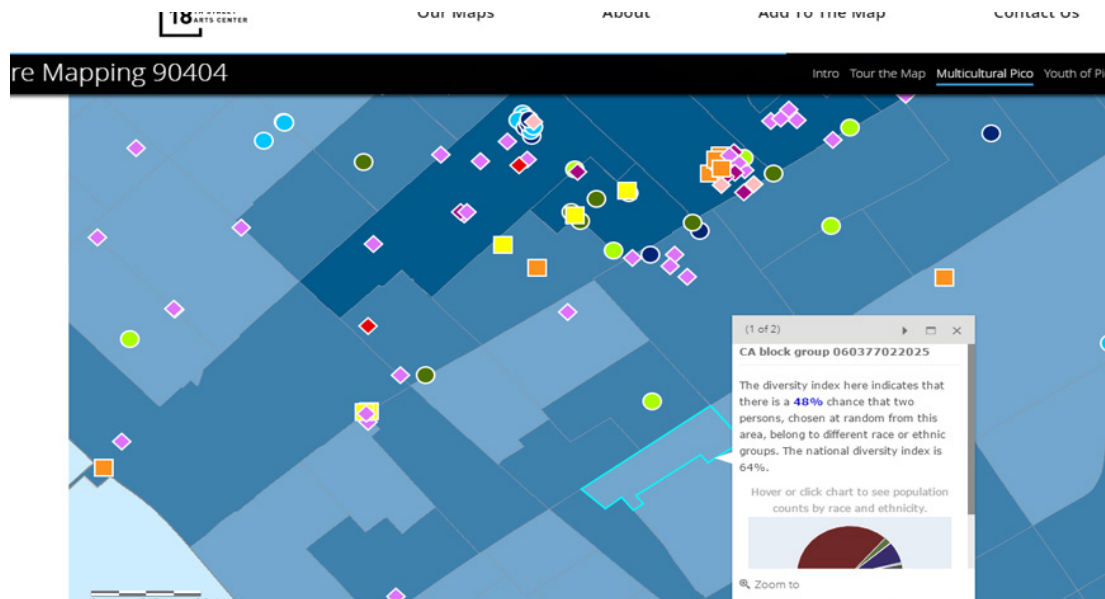
Story Map and Pro Map

We have two ways to experience the map on our site. **The Story Map** is for new users, and shows examples of the map in context with explanations, videos, and other map layers that show interesting map trends and connections. **The Pro Map** allows users to filter, search, and configure the map themselves.

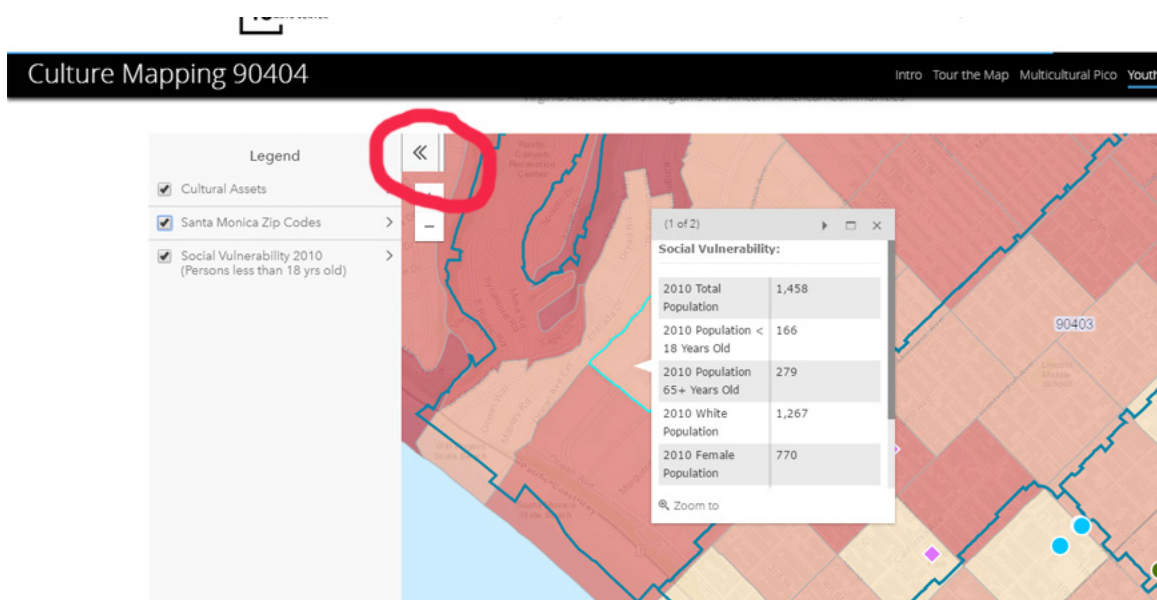


Using the Story Map

To use the Story Map, keeping scrolling down. You can watch videos, or click on the map points and the map layers (the blocks of color) to learn more demographic information about each census tract. The colored points are the cultural assets our community has collected so far.

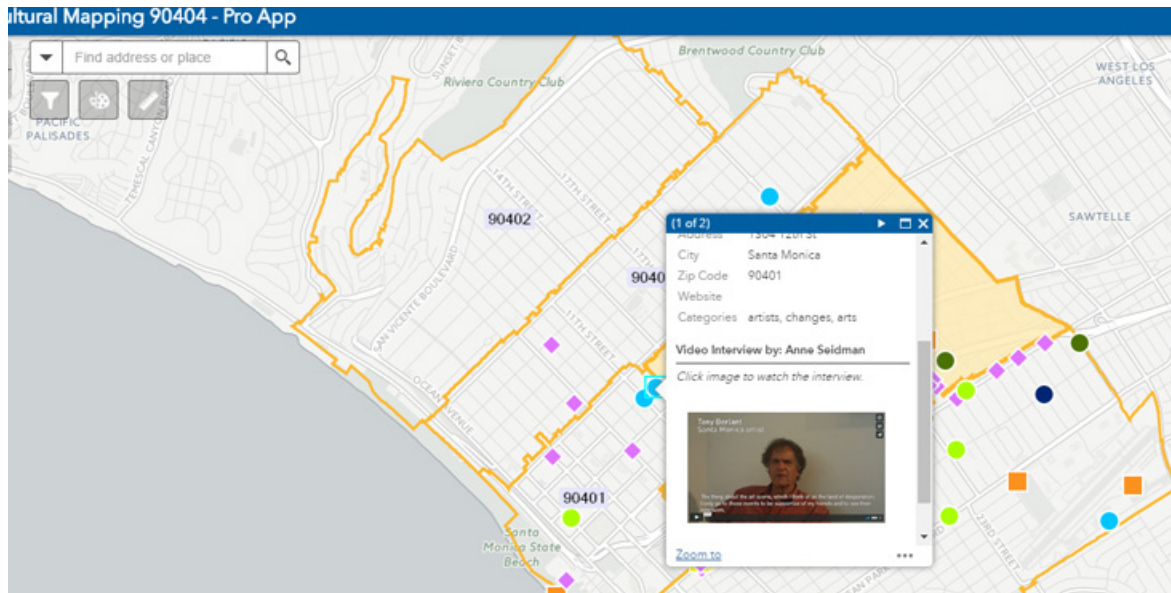


You can learn more about the layers and where the demographic information comes from by using the toggle in the upper left corner. You can also zoom in and out on the map [here](#).



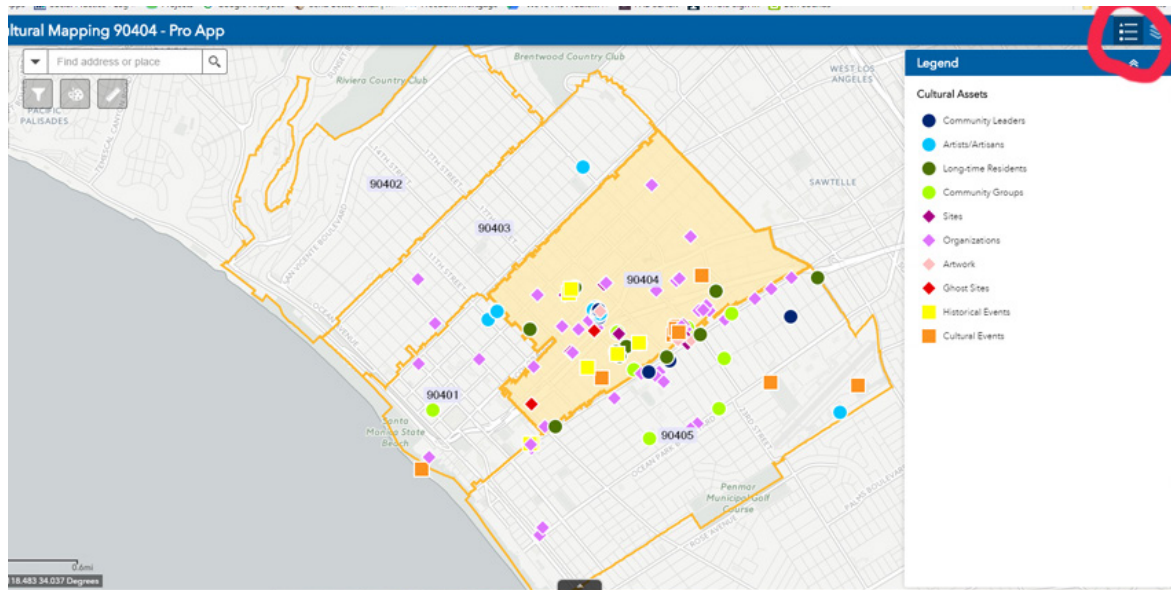
Cultural Assets

Each cultural asset has a description, category, and website information. Many also have video interviews or accompanying photos. You can access this information by clicking on each point and reading the information in the pop-up box. Scroll down to see all of the information included. Click on the video to watch the interviews, or the photo thumbnail to view photos.



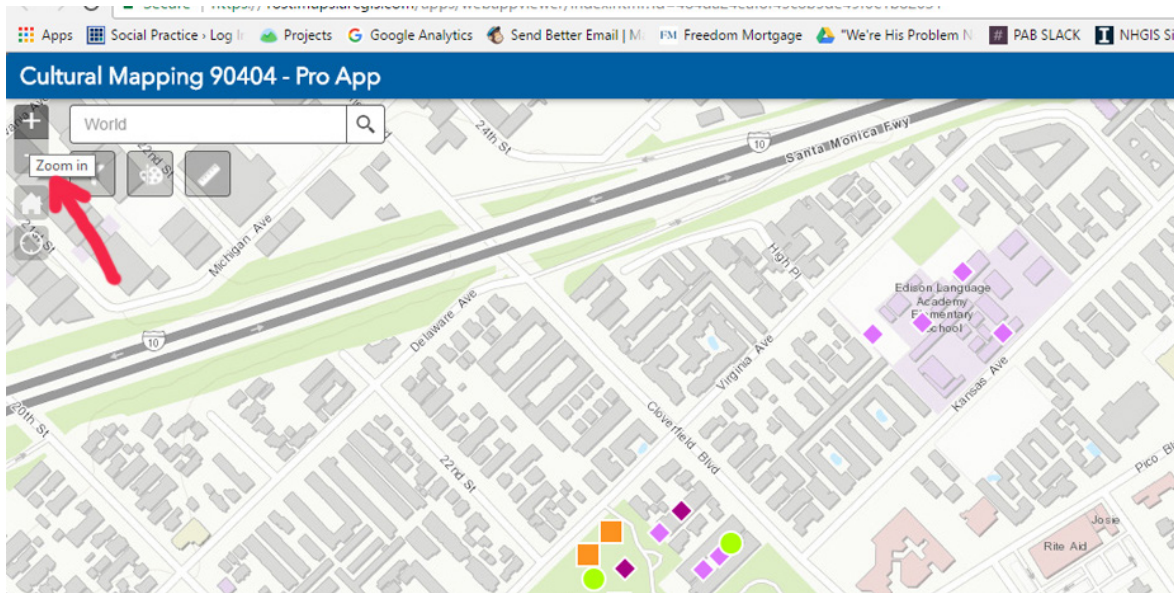
Legend

Each asset has a category. You can view all the categories in the Pro Map by clicking on the Legend icon in the top righthand corner.



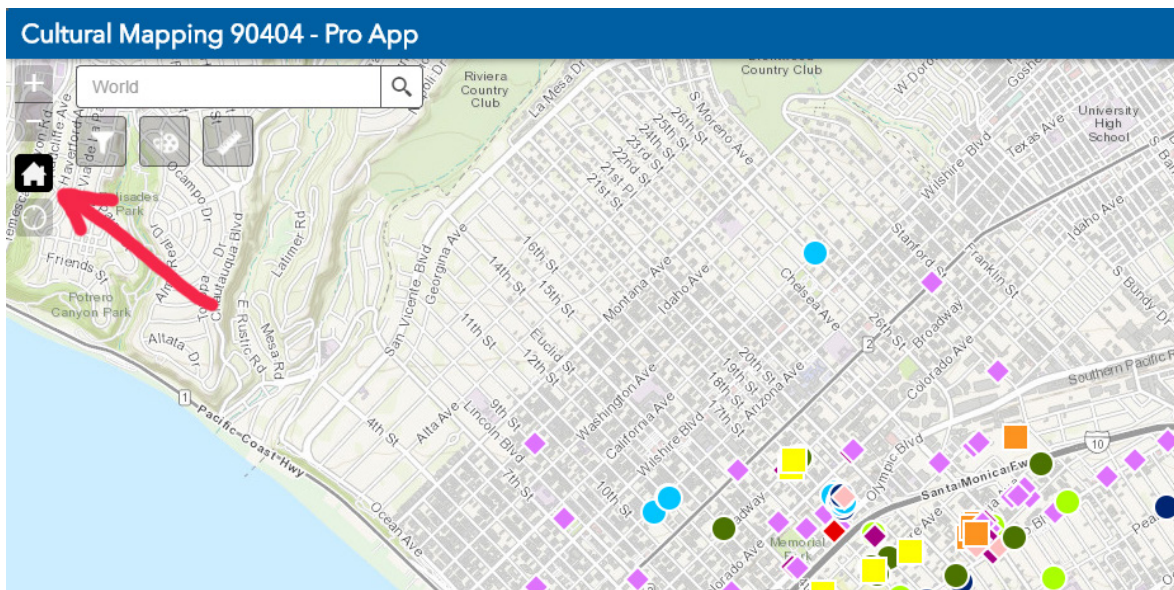
Using the Pro Map: Zoom

By using the Zoom buttons on the top lefthand corner, you can see much more map detail. Many areas of the map have clusters of assets (such as Virginia Ave. Park) so zoom in to select individual assets and see street level detail.



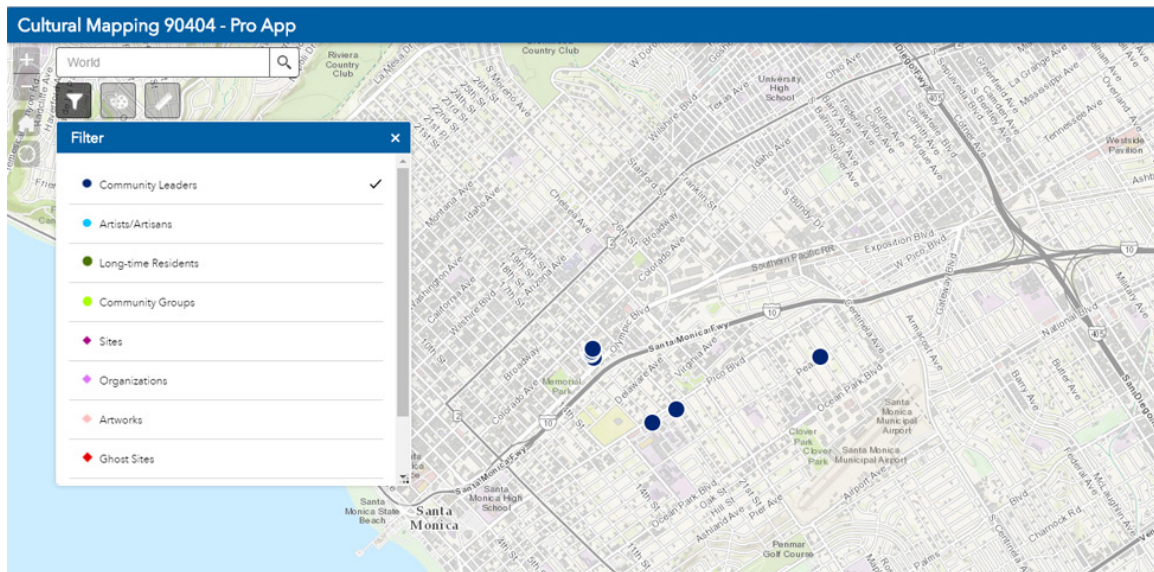
Using the Pro Map: Home Button

To return to the original map view, you can always click the “Home” button in the top lefthand corner.



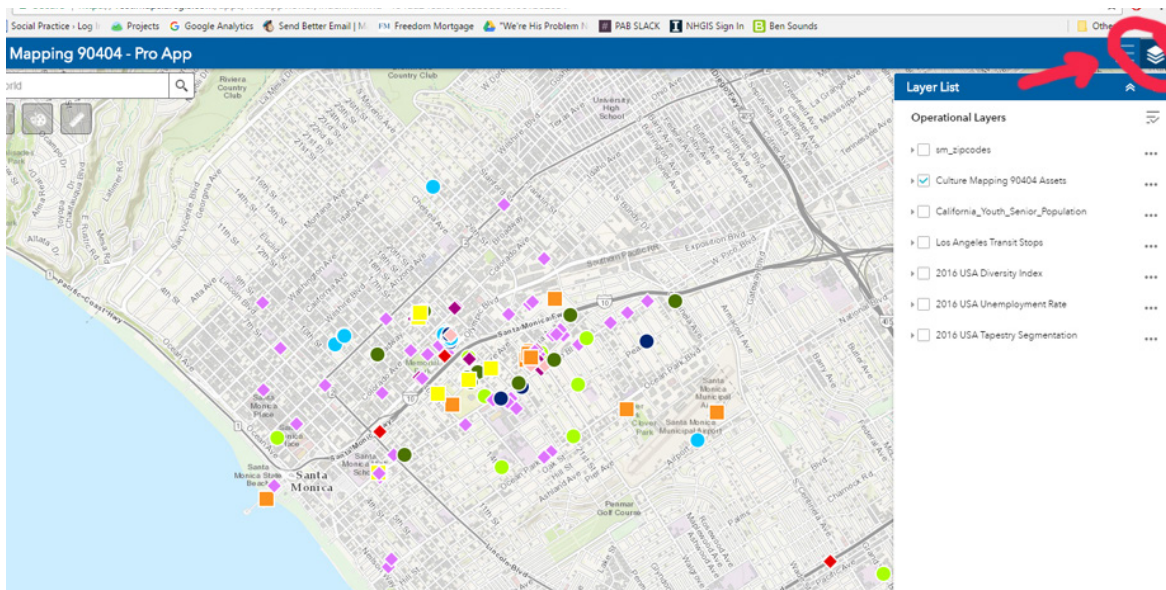
Using the Pro Map: Filters

If you click on the Filters icon in the top left corner of the Pro Map, you can click on one filter at a time to see just those results on the map. To view all the cultural assets again, simply uncheck all the filters.



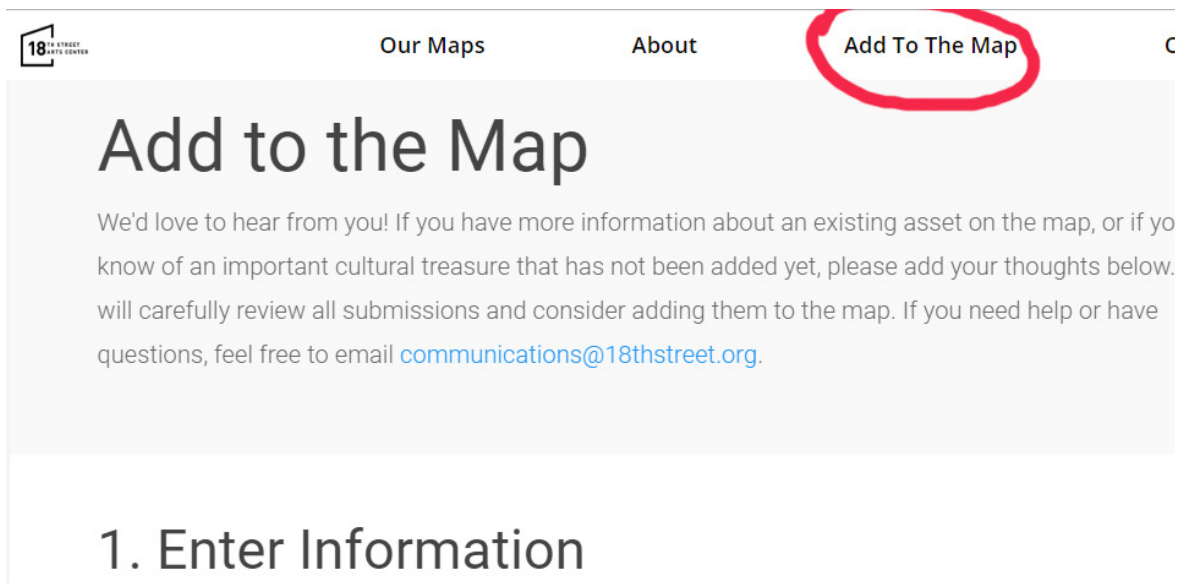
Using the Pro Map: Layers

In the top lefthand corner, you will see a layer list. Each of these layers represents publicly available demographic data. Click on each layer to see it overlaid on the Cultural Asset Map. Now you can compare demographic data or transit data with the cultural points on the map.



Grow the Map

This map is a work in progress! We'd love your help in growing it. If you have a correction to make or a new asset to submit, please fill out the Add to the Map form.



The screenshot shows the top navigation bar of the 18th Street Center website. The logo is on the left, followed by links for 'Our Maps', 'About', and 'Add To The Map'. The 'Add To The Map' link is circled in red. Below the navigation bar is a light gray box with the heading 'Add to the Map'. The text inside the box says: 'We'd love to hear from you! If you have more information about an existing asset on the map, or if you know of an important cultural treasure that has not been added yet, please add your thoughts below. We will carefully review all submissions and consider adding them to the map. If you need help or have questions, feel free to email communications@18thstreet.org.' Below this box is a section titled '1. Enter Information'.

18th STREET CENTER

Our Maps About Add To The Map C

Add to the Map

We'd love to hear from you! If you have more information about an existing asset on the map, or if you know of an important cultural treasure that has not been added yet, please add your thoughts below. We will carefully review all submissions and consider adding them to the map. If you need help or have questions, feel free to email communications@18thstreet.org.

1. Enter Information

Get in Touch!

Thank you so much for taking the time to use our Culture Mapping 90404 Cultural Asset Map. If you have feedback, questions, or comments, please get in touch at communications@18thstreet.org or use the Contact Us form on the website.